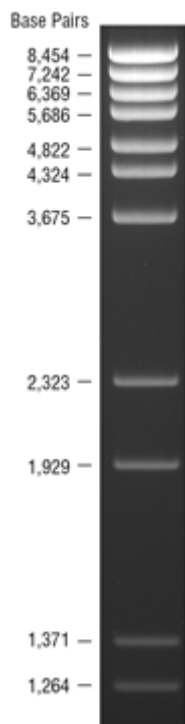




Phage Lambda DNA BstEII II digest

Description

The *BstE II* digest of λ DNA yields the following discrete fragments (inbase pairs): 8453*, 7242, 6369, 5687*, 4822, 4324, 3675, 2323, 1929, 1371, 1264, 702, 224, 117.



Form

Liquid. Supplied in 6X Green Gel-Loading Buffer

Concentration

0,1-0.5 $\mu\text{g}/\mu\text{l}$

Preparation

Lambda DNA was completely digested by *BstE II*, phenol extracted, ethanol precipitated, dissolved in 10 mM Tris-HCl (pH 8.0) and 1 mM EDTA.

Storage: -20°C

Transport: Blue Ice

Note

Dilute in TE or other buffer of minimal ionic strength. DNA may denature if diluted in dH₂O and subsequently heated.

[*The cohesive ends (12b cos site of bacteriophage) of fragments 8453 bp and 5687 bp may anneal and form an additional band. These fragments may be separated again by heating to 65 °C for 5 min and then cooling on ice for 3 min.]

Ordering information:

Cat.-no	Description	Amount
300019	Phage Lambda DNA BstE II	200 μg
300020	Phage Lambda DNA BstE II	5x200 μg

GeneON .. a good decision ..

Contact Phone +49-(0)-621- 5720 864 Fax: +49-(0)-621-5724 462

E-Mail: <mailto:info@geneon.net> WEB: <http://www.GeneOn.net> Version: 07.2011 UK

Unless specified otherwise, all products of GeneON are sold for research use only.

.. a good decision ..